



TRAVIS COUNTY / PFLUGERVILLE ESD No. 2 / FIRE DEPARTMENT



Because We Care...



Who are we?

Travis County ESD No. 2 / Pflugerville Fire Department is the busiest Emergency Services District (ESD) in the county with a great responsibility in providing fire suppression, fire prevention, and first response emergency medical care. Covering 100 square miles, we have personnel and equipment working out of four fire stations with 68 career firefighters ready 24 hours a day to serve the 97,000 citizens within the District.

What is an ESD?

An ESD is an independent local government entity providing emergency and non-emergency services governed by a Board of Commissioners appointed by County Commissioners. Legislation allows ESDs to impose and collect taxes and adopt and enforce a fire code.

How are we funded?

By vote of residents, we collect property tax not to exceed ten cents per \$100 of property tax value. Additionally, a voter approved half-cent sales tax is collected.

In 2006, the tax funding represented 95% of the District's total budget. In 2011, the tax funding represented only 80% of the budget.

Message from the Chief



Because We Care is our motto. We are dedicated to pursuing excellence in serving the citizens of the District and working together for a safe and well community. It is important to us to continue as a financially stable organization that delivers a superior level of traditional and innovative emergency and non-emergency services.

We evolved with the growing community from neighbors organizing a bucket brigade to a Volunteer Fire Department in 1955 to the current Emergency Services District, always with a commitment to provide the best approach to emergency response, fire safety, prevention and education in the most efficient and cost effective manner. The values established almost 60 years ago with the Volunteer Department remain timeless with professionalism, integrity, compassion, honor, bravery, and dedication to serve. These values are the foundation that guide us to the future.

Fire Chief Ron Moellenberg



Board Room Mural by Robert McGrew, Firefighter

...we serve the citizens of the District.

Statistics

	2006	2011
Average Pop.	65,000	97,000
Firefighters	57	68
Call Volume	4,896	6,814



Fire Response

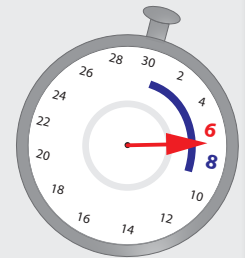
Nationally recognized organizations establish guidelines for fire departments to measure performance when responding to fire emergencies. Our goal is to arrive with the appropriate amount of fire fighters to rescue people, contain the fire and then extinguish the fire.

Emergency Medical Response

Our firefighters have at least the minimum required Emergency Medical Technician certification and are the first responders to medical emergencies. Performance standards are also established for medical emergencies. Our goal is to arrive with the appropriate amount of people with the necessary skills and equipment to reverse and/or stabilize medical emergencies.

Our average fire and emergency medical response time is 8:10.

Our goal is 6:30 or less.



Our goal is to not only maintain our current response time, but improve upon it.

Because We Care we want to have the right amount of trained personnel with the right type of equipment to best meet those unexpected needs whether it involves medical emergency response, structure fires, rescues, vehicle accidents, or wildland/urban interface fire expertise.



Central Fire Station
203 East Pecan Street

Station No. 2
15300 Bratton Lane

Station No. 3
2301 Kelly Lane

Station No. 4
911 Pflugerville Loop

Administrative Offices
201 E. Pecan St.
Pflugerville, TX 78660
(512) 251-2801

Please visit us at pflugervillefire.org

FOR EMERGENCIES CALL 9-1-1